

SUBMITTAL TO THE BOARD OF SUPERVISORS
COUNTY OF RIVERSIDE, STATE OF CALIFORNIA



FROM: TLMA – Transportation Dept. SUBMITTAL DATE:

SUBJECT: Approval of **TRACT 28684-1**
A Schedule "A" Subdivision in the Eastvale Area

RECOMMENDED MOTION: That the Board approve the Improvement Agreements and Securities as approved by County Counsel, approve the final map and authorize the Chairman to sign the Improvement Agreements and map for Tract 28684-1.

BACKGROUND: This map complies in all respects with the provisions of Division 3 of Title 15 of the Government Code and applicable local ordinances. The developer desires to enter into Improvement Agreements to guarantee the construction of the required improvements and has submitted Improvement Agreements and Securities which have been approved by County Counsel.

REVIEWED BY EXECUTIVE OFFICE

[Signature]
DATE 3/2/03

HS:lf

Submittals: Final Map
Road/Drainage Improvement Agrmts
Water System Maintenance Agrmts
Sewer System Maintenance Agrmts
Survey Monument Agreements

[Signature]
George A. Johnson
Director of Transportation

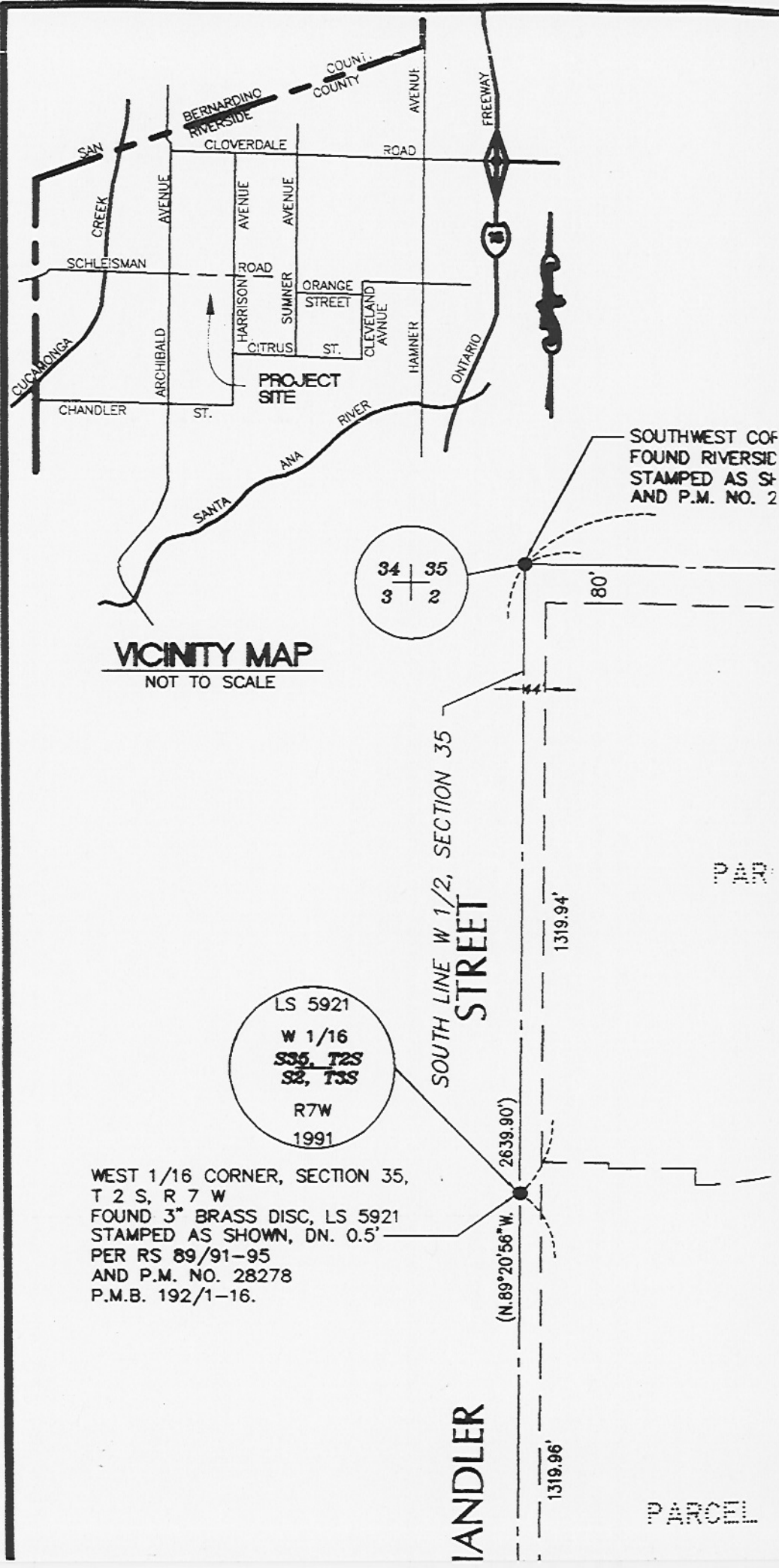
Department Recommendation: Consent Policy
Per Executive Office: Consent Policy

Prev. Agn. Ref.

Dist. 2

AGENDA NO.

TR 28689-1



LS 5921
W 1/16
~~S35, T2S~~
S2, T3S
R7W
1991

WEST 1/16 CORNER, SECTION 35,
T 2 S, R 7 W
FOUND 3" BRASS DISC, LS 5921
STAMPED AS SHOWN, DN. 0.5'
PER RS 89/91-95
AND P.M. NO. 28278
P.M.B. 192/1-16.

CHANDLER

PARCEL